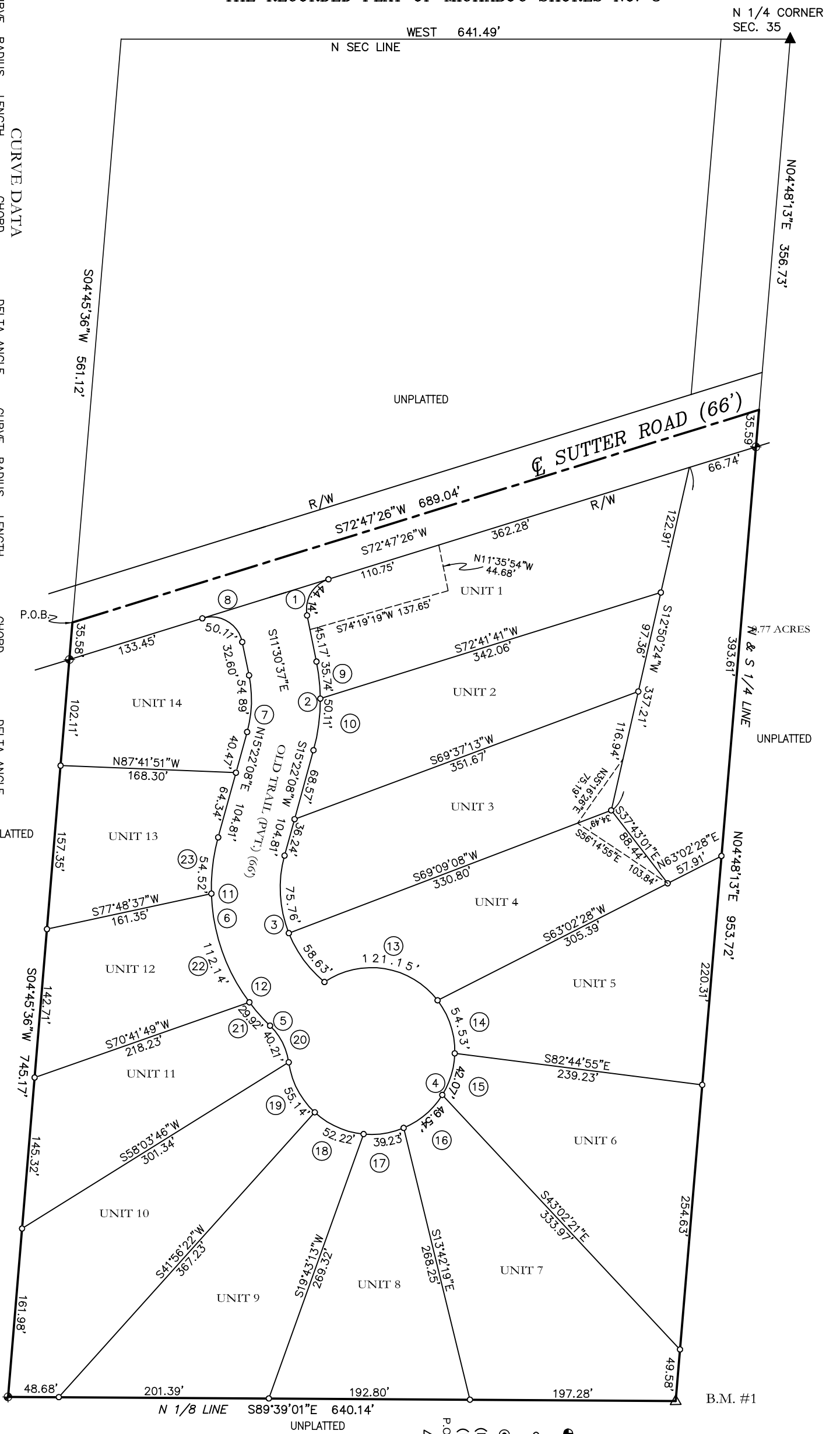


THE RECORDED PLAT OF MICHABOU SHORES NO. 3

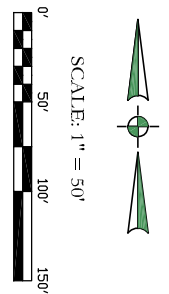
N 1/4 CORNER
SEC. 35



CURVE DATA

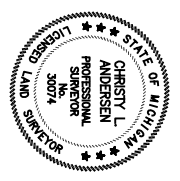
CURVE	RADIUS	LENGTH	CHORD	DELTA ANGLE	CURVE	RADIUS	LENGTH	CHORD	DELTA ANGLE
1	30.00'	44.14'	S 30°38'25\"	W 40.26'	13	59.14'	230.56'	S 80°48'51\"	E 109.90'
2	183.00'	85.85'	S 01°55'45\"	W 85.07'	14	27.13'	94.49'	S 17°54'19\"	E 53.48'
3	117.00'	134.39'	S 17°32'16\"	E 127.13'	15	20.97'	71.41'	S 16°41'12\"	E 41.59'
4	80.00'	413.88'	S 24°00'46\"	W 84.29'	16	24.67'	85.15'	S 49°29'34\"	W 48.75'
5	60.00'	40.21'	N 26°58'40\"	W 39.46'	17	19.57'	66.27'	S 81°16'56\"	W 38.84'
6	183.00'	196.58'	N 15°24'16\"	W 187.26'	18	25.99'	90.14'	N 65°58'12\"	W 51.29'
7	117.00'	54.89'	N 01°55'45\"	E 54.39'	19	27.44'	95.65'	N 27°31'28\"	W 54.06'
8	30.00'	50.11'	N 59°21'35\"	W 44.48'	20	20.01'	69.58'	S 26°58'40\"	E 39.46'
9	17.86'	57.86'	S 05°54'55\"	E 35.68'	21	14.95'	48.20'	N 41°29'41\"	W 29.88'
10	25.04'	82.08'	S 07°31'28\"	W 49.95'	22	55.85'	192.57'	N 19°15'24\"	W 110.39'
11	37.72'	130.70'	N 03°10'54\"	W 74.44'	23	27.24'	89.62'	N 06°50'01\"	E 54.32'
12	29.24'	99.18'	N 36°05'17\"	W 58.02'					

- LEGEND**
- ⊕ = MAJOR BOUNDARY MONUMENT
4" X 36" CONC. MON. & CAP #30074
 - = UNIT BOUNDARY MONUMENT
1/2" X 24" REROD & CAP #30074
 - ⊙ = BOUNDARY CONTROLLING MONUMENT FOUND
 - (R) = RECORDED
 - (M) = MEASURED
 - P.O.B. = POINT OF BEGINNING
 - △ = BENCHMARK



BEARING BASIS IS THE RECORDED
PLAT OF MICHABOU SHORES NO. 3
BENCHMARK #1 (BM) = TOP OF CONC.
MONUMENT AT THE SOUTHEAST
CORNER OF PROPERTY
ELEVATION = 701.2 (USGS DATUM)

DATE



CHRISTY L. ANDERSEN
PROFESSIONAL SURVEYOR
LICENSE NO. 30074
ANDERSEN & CRAIN, INC.
2636 GARFIELD ROAD N
SUITE 30
TRAVERSE CITY, MICHIGAN 49686



Andersen & Crain, Inc
Surveying, Engineering, Consulting, & Design
2636 Garfield Road N, Suite 30
Traverse City, MI 49686
Phone: (231) 947-7255 Fax: (231) 947-7275

SLEEPING BEAR WOODS
SEC. 35, LAKE TWP., BENZIE CO.
SURVEY PLAN-UNITS 1-14

PREPARED DATED: 12-28-05
JOB NUMBER: 140004
SHEET: 3